



ATTENTION TO DETAILS
MAKES THE DIFFERENCE



WWW.SUITELIFT.IT

MANUFACTURED AND DISTRIBUTED BY



THE QUALITY YOU DESERVE!

The Suite lift is the platform made-to-measure, environmental-friendly with low energy consumption.



"GIOTTO"
ROUND SUITE

CAR AND METAL
SHAFT PAINTED
IN RAL 9001

ROUND GLASS
SHAFT DOORS



BRIDGE
LINK

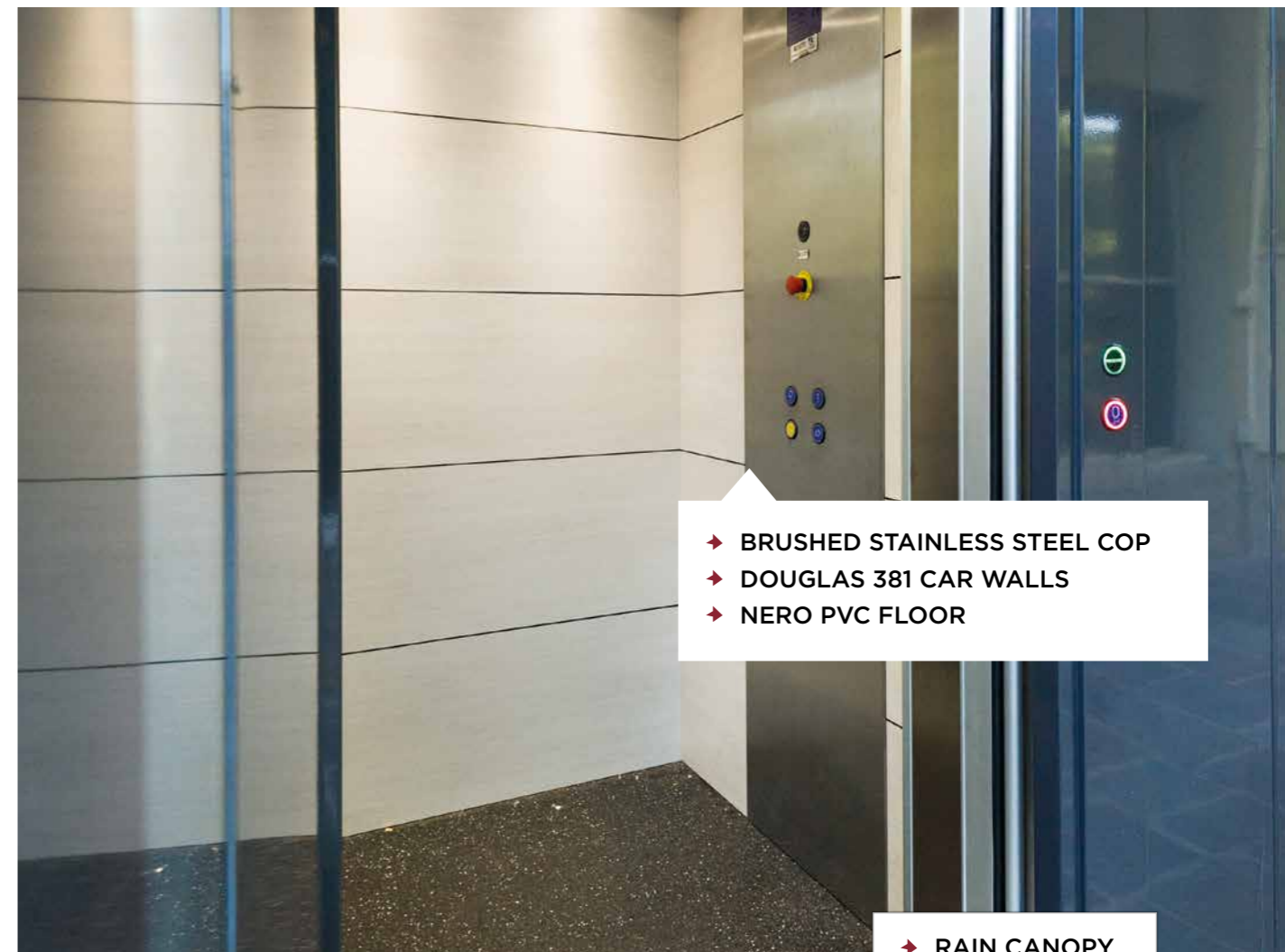
"DESENZANO"
METAL SHAFT

STOP-SOL
GLASS

OUTDOOR



- RAIN CANOPY
- STOP-SOL GLASS
- BALUSTRADE
- BRIDGE LINK

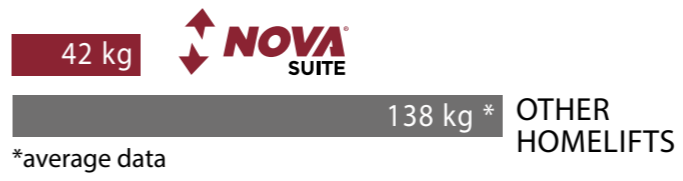


- BRUSHED STAINLESS STEEL COP
- DOUGLAS 381 CAR WALLS
- NERO PVC FLOOR

- RAIN CANOPY

RESPECT FOR THE ENVIRONMENT

Suite traction is designed and manufactured according to Green Energy Principles, it reduces energy consumption and consequently the emissions of CO2 up to 70%.



INDOOR



- SMOKED GLASS
- "GRETA" DOOR
- MICACEUS METAL SHAFT

SUITE OPERATES ON 230V-50 HZ. SIMPLY.

The **SUITE lift** fall under **class A** according to the measurements provided by the VDI 4707-1* guidelines

Suite requires only **0,55 kW**, same as your vacuum cleaner



A CLASS



MASONRY SHAFT

SAFETY FIRST!

Automatic return to lowest floor in case of power failure is provided as standard



* Until the ISO industry standards will be approved, the VDI guidelines published by the Association of German Engineers are the authoritative and diffuse source in Europe for the measurements and classification of lifts' energy consumption. In no case the VDI guidelines can replace the international ISO standards that will be law in the future in the sector.

ELECTRIC SUITE



▶ "DESENZANO" METAL SHAFT WITH CLEAR AND MILK-WHITE GLASS PANELS

▶ EXTERNAL SIDE OF "MARYLIN-TH" SWING DOOR



▶ INNER SIDE OF "MARYLIN-TH" SWING DOOR

▶ "DESENZANO" METAL SHAFT WITH CLEAR GLASS PANELS



HYDRAULIC SUITE



▶ VENTILATION WINDOW

▶ BRIDGE LINK

MADE-TO-MEASURE SOLUTIONS



MIRROR
STAINLESS STEEL

METAL SHAFT
PAINTED
IN RAL 7016



THEY EVEN CONSIDERED MY CAT!
Cat's bridge walk provided on request.

BRIDGE WALK



"GIOTTO" ROUND
SUITE PAINTED
IN RAL 9010

VENTILATION GRID

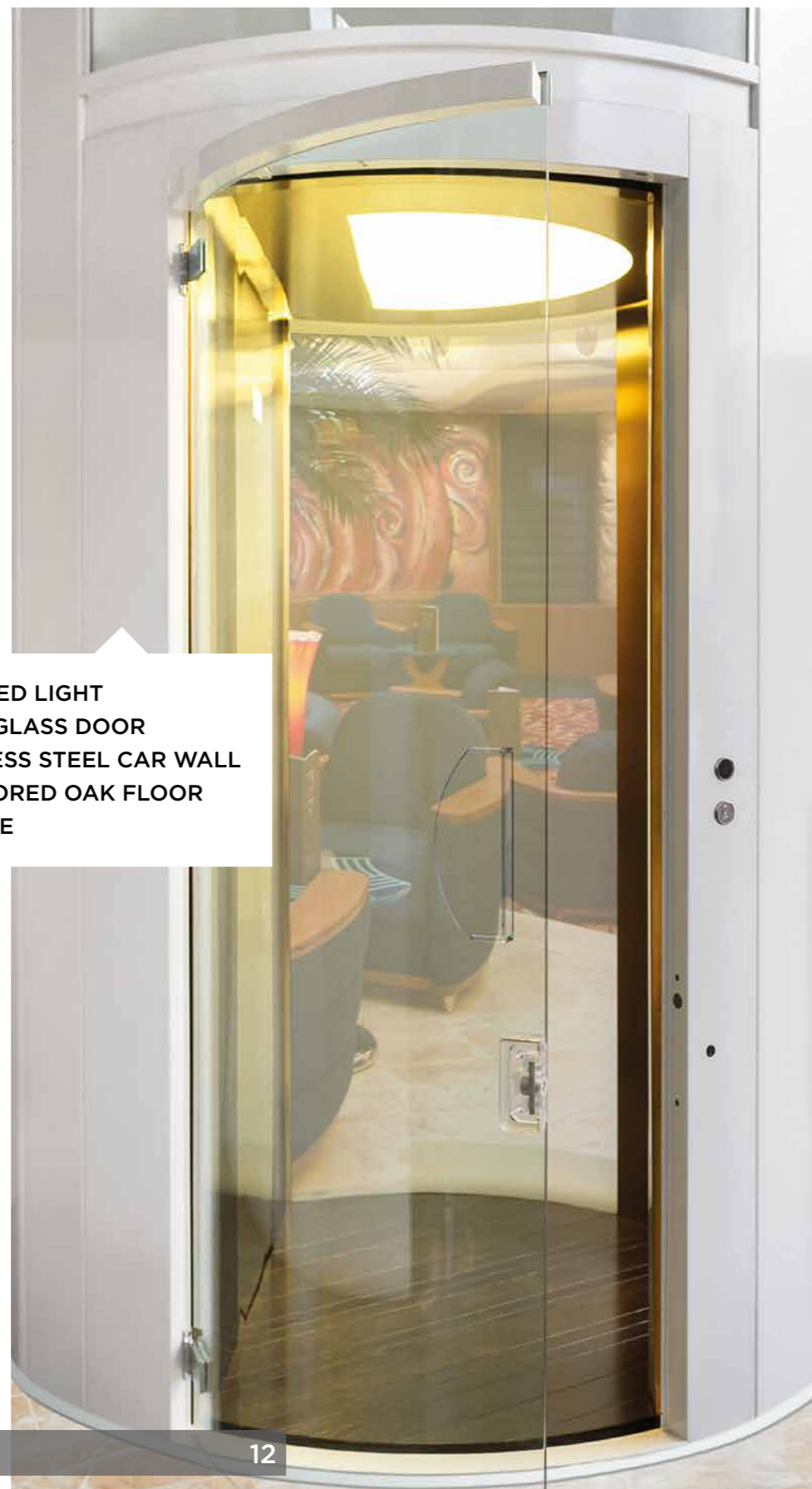


WE HAVE CUSTOMISED SOLUTIONS FOR ALL APPLICATIONS

ROUND HOMELIFT



- ▶ SUSPENDED LED LIGHT
- ▶ ROUND FULL GLASS DOOR
- ▶ GOLD STAINLESS STEEL CAR WALL
- ▶ WALNUT-COLORED OAK FLOOR
- ▶ GLASS HANDLE



12

NARROW SHAFT



68 CM
OUTSIDE SHAFT



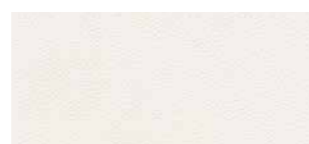
50 CM
INSIDE CAR

13

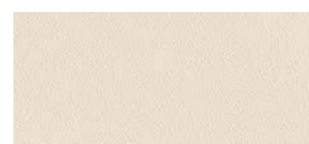
CAR FINISHES

SKINPLATE FINISHES

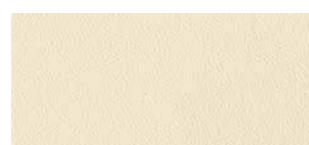
STANDARD



A4



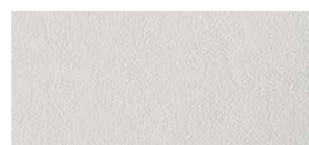
A13



G1



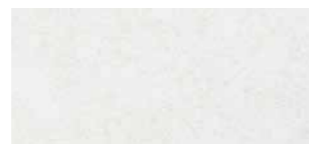
B13



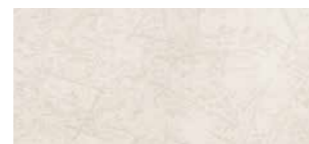
N1



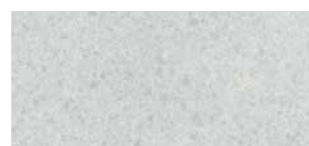
F12PPS



PPS10



PPS11



PPS12

- PANORAMIC WALL
- PPS10 CAR WALL

CAR FINISHES

PLASTIC LAMINATE FINISHES

OPTIONAL



DOUGLAS ICE
388 MICROLINE



ACERO OTTAWA
385 SEI-DUE



DOUGLAS VANILLA
381 MICROLINE



DOUGLAS
387 MICROLINE



TEAK SUMATRA
1612 SEI-DUE



ROVERE TENNESSEE
656 HOLZ

- DOUGLAS 388 CAR WALLS
- BRUSHED STAINLESS STEEL HORIZONTAL COP
- SOLID WOOD FLOOR BY CLIENT

The colors of the actual material provided may differ from those shown in the printed catalogue. Contents subject to change without notice. For more detailed information visit our website www.suitelift.it

RANGE OF FINISHES



- BRUSHED STAINLESS STEEL METAL SHAFT
- BRUSHED STAINLESS STEEL "GRETA" DOOR

- "ZODIACO" SUSPENDED CEILING
- TEAK SUMATRA 1612 CAR WALLS
- MIRROR GOLD STAINLESS STEEL CAR FINISHES



BEAUTIFUL IN ALL ENVIROMENTS

- Attention to detail
- Elegant finishes
- Door recessed handle
- Made-to-measure sizes and solutions

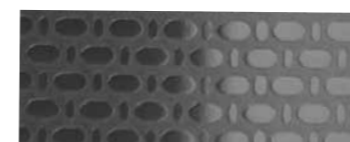
STAINLESS STEEL FINISHES



Brushed stainless steel



Mirror stainless steel



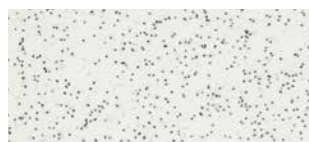
Patterned stainless steel



CAR FINISHES

PVC

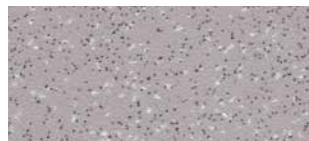
STANDARD



GHIACCIO



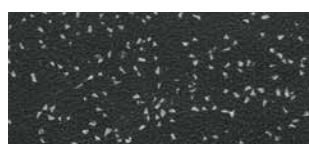
SABBIA



GRIGIO



BLU



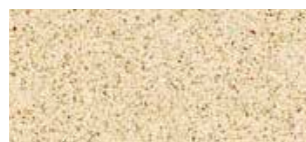
NERO

GRANITE FLOOR

OPTIONAL



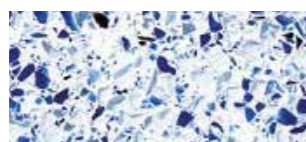
WHITE STAR



CREMA LUNA



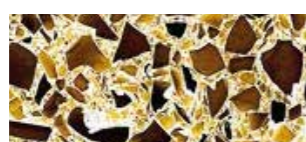
DOVE TAIL



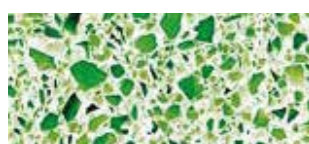
BLUE DREAM



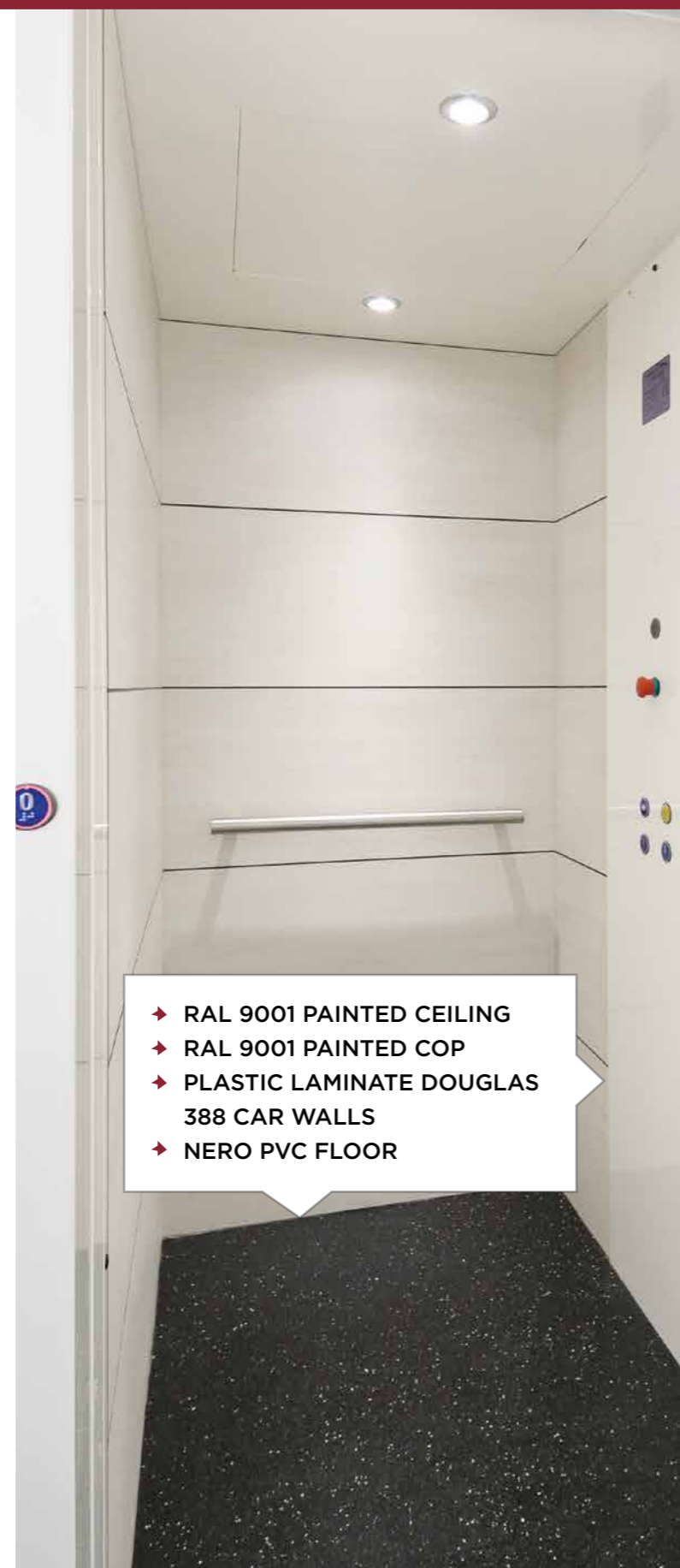
BLACK DIAMOND



CHIARO AMBRA



GREEN DREAM



- RAL 9001 PAINTED CEILING
- RAL 9001 PAINTED COP
- PLASTIC LAMINATE DOUGLAS 388 CAR WALLS
- NERO PVC FLOOR



Allowance for floor provided by clients
Max thickness 2 cm

METAL SHAFTS - UNI EN 1090

STANDARD RAL COLOURS

AVAILABLE FOR METAL SHAFTS AND LANDING DOORS FOR INDOOR AND OUTDOOR



1014 IVORY



1015 LIGHT IVORY



5024 PASTEL BLUE



6011 RESEDA GREEN



7016 ANTHRACITE GREY



7032 PEBBLE GREY



7035 LIGHT GREY



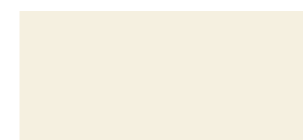
7037 DUSTY GREY



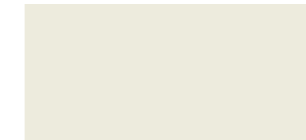
8002 SIGNAL BROWN



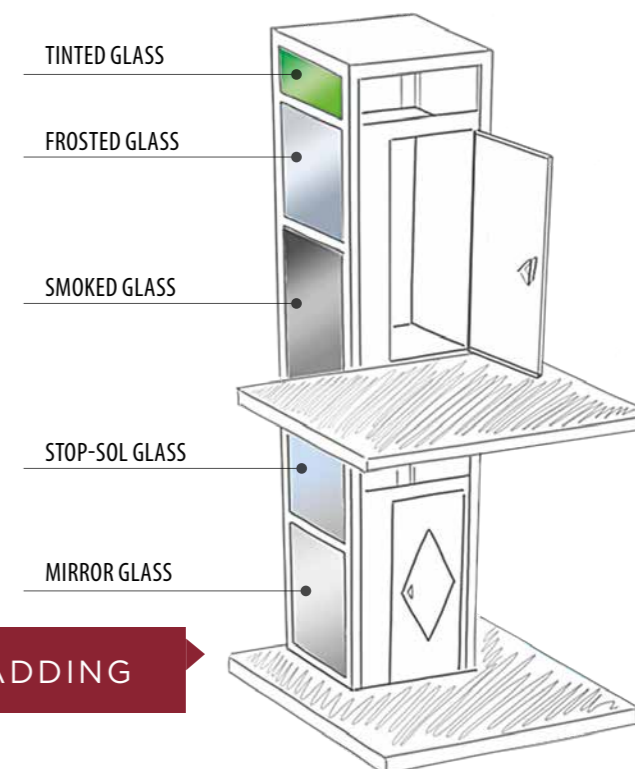
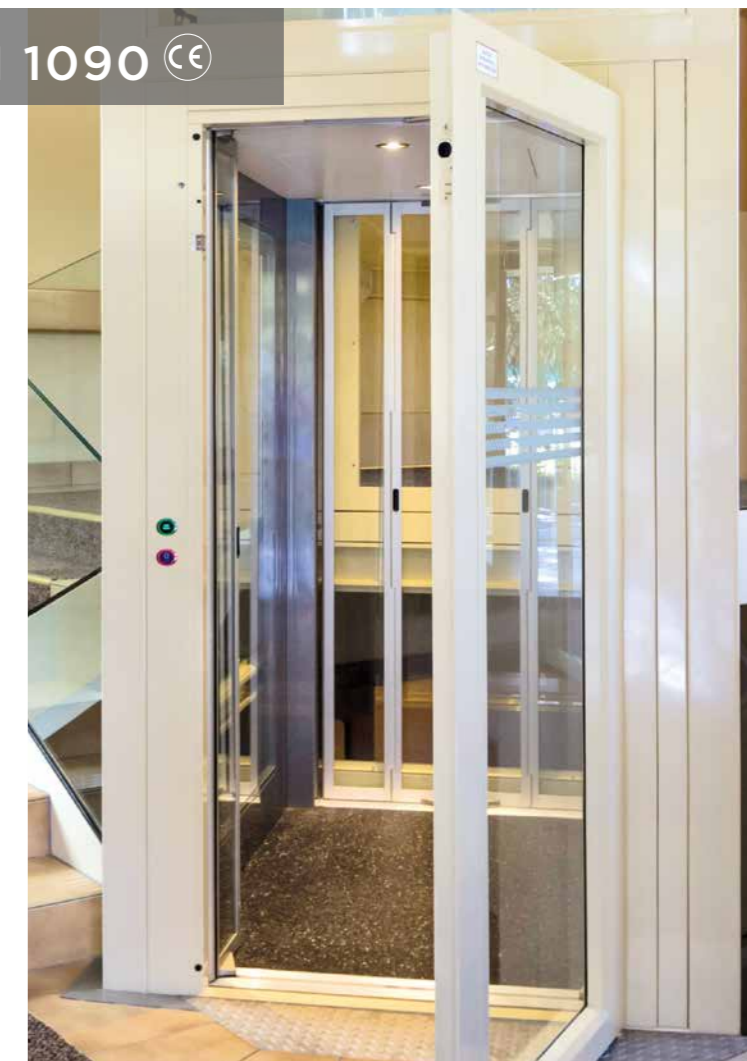
8017 CHOCOLATE BROWN



9001 CREAM



9002 GREY WHITE



GLASS CLADDING

The colors of the actual material provided may differ from those shown in the printed catalogue. Contents subject to change without notice. For more detailed information visit our website www.suitelift.it

DOORS

LANDING SWING DOORS

1
GRAPH
WHITE VARNISHED



2
WOOD
NATURAL OAK



3
LEATHER
LEATHER-COVERED
AND GLAZED



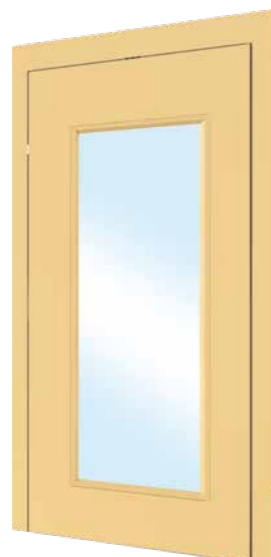
4
KRISTAL
FULL GLASS



5
GRETA
RAL 9001



6
MARYLIN
RAL 1014



7
ANNA
RAL 7035



8
EMMA
RAL 7032



EI120 FIRE RATED
DOOR "SOFIA"
AVAILABLE

AUTOMATIC DOORS

9
**FOLDING CAR
DOOR**
STAINLESS STEEL



10
**FOLDING CAR
DOOR**
GLASS



11
**AUTOMATIC CAR
AND LANDING
SLIDING DOOR**
BLIND



WITH 2 OR 3 PANELS

12
**AUTOMATIC CAR
AND LANDING
SLIDING DOOR**
GLASS

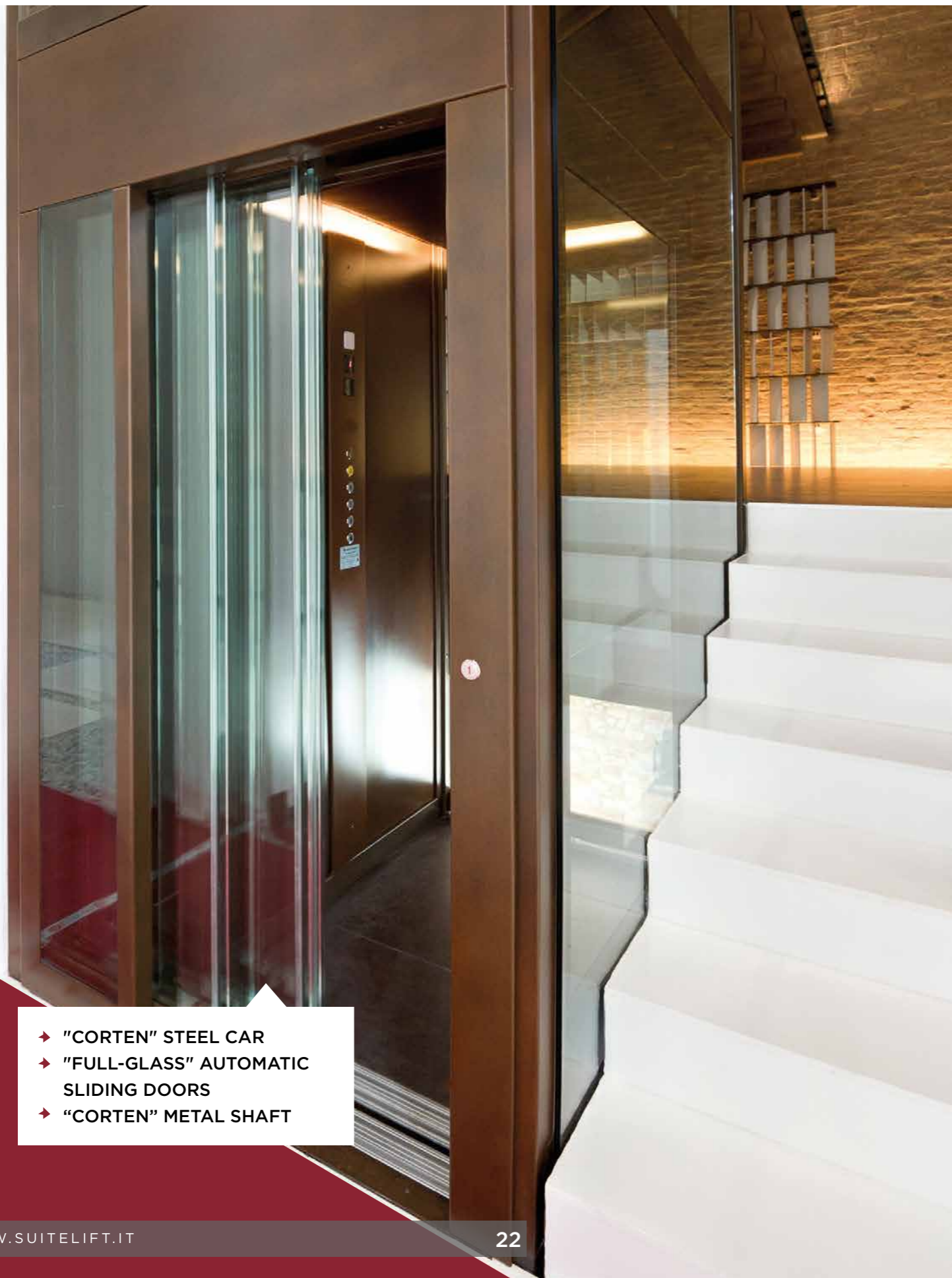


WITH 2 OR 3 PANELS

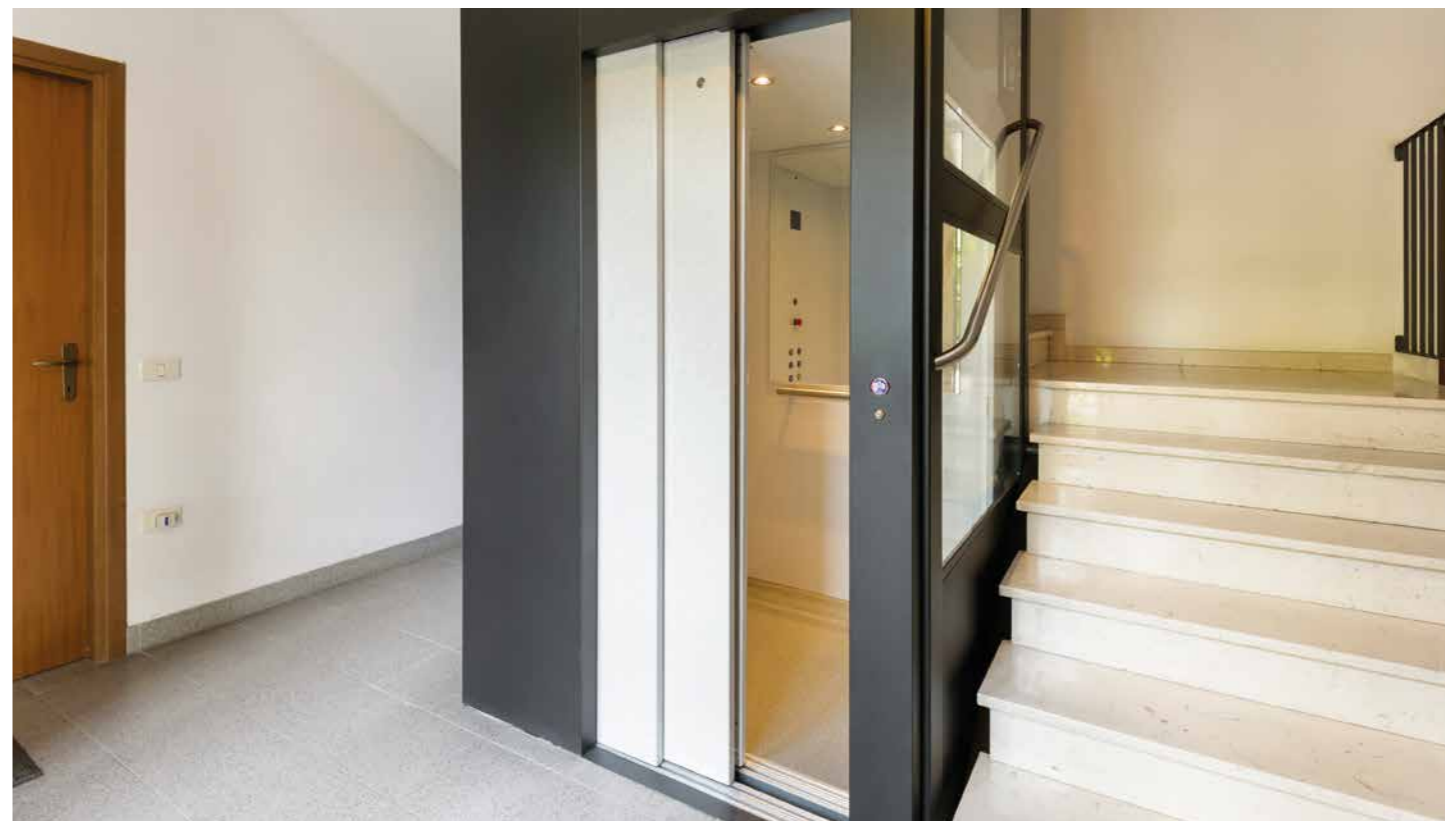


"GRETA" DOOR

AUTOMATIC CAR AND LANDING SLIDING DOORS



- "CORTEN" STEEL CAR
- "FULL-GLASS" AUTOMATIC SLIDING DOORS
- "CORTEN" METAL SHAFT



AUTOMATIC SOLUTIONS



1 Automatic car and landing sliding doors

2 Landing swing door with automatic opener

3 Folding car door

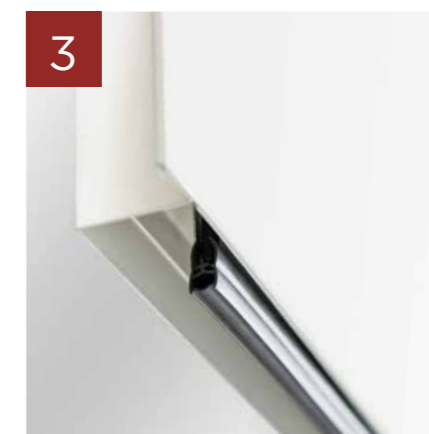
WEATHER-RESISTANT DOORS

Designed to reduce thermal transmittance



- 1. SEALING ALL AROUND SWING PANEL
- 2. DOUBLE GLAZED
- 3. AUTOMATIC LOWER SEALING

AVAILABLE MODELS: EMMA AND MARYLIN



The tests performed on "Marylin-TH" door confirmed a **thermal insulation** of $U_d=2,4 \text{ W/mqk}^*$, which is 4 times less than a standard single panel swing door..

*Calculations made according to the UNI EN ISO 10077-2



OPTIONS AVAILABLE

KEYS

<p>1 safety key - on swing door</p> 	<p>2 encoded key at landing</p> 	<p>3 enabling key at landing</p> 	<p>4 enabling key in car</p> 
--	--	--	---

DISPLAY

<p>5 in car</p> 	<p>at landing</p> 
--	---

DISPLAY DIGITALE

<p>6 in car</p> 	<p>at landing</p> 
---	---

SWING DOOR MANUAL RELEASE

7
from inside car






TELEPHONE HANDSET

8
in car



LIGHTING

<p>9 spot LEDs</p> 	<p>10 lighting - LED panel</p> 	<p>11 EXTERNAL courtesy light</p> 
---	---	--

INFRA-RED LIGHT

12
curtain



CABINET

13
for Traction model



CABINET

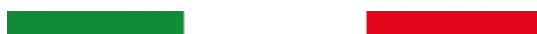
14
for Hydraulic model



2100 mm	
350 mm	
250 mm	
	Medium
	Small
	750 mm
	600 mm
	410 mm
	360 mm
	1400 mm
	1400 mm



WWW.SUITELIFT.IT



INFO@SUITELIFT.IT

EDITION MAY 2018



NOVA s.r.l | VIA G. GALILEI, 116/C - 40014 PALATA PEPOLI - CREVALCORE (BOLOGNA) - ITALIA
TEL. +39.051.985.330 FAX +39.051.985.220

WWW.MONDONOVA.IT
INFO@MONDONOVA.IT

ASSOCIATO:

